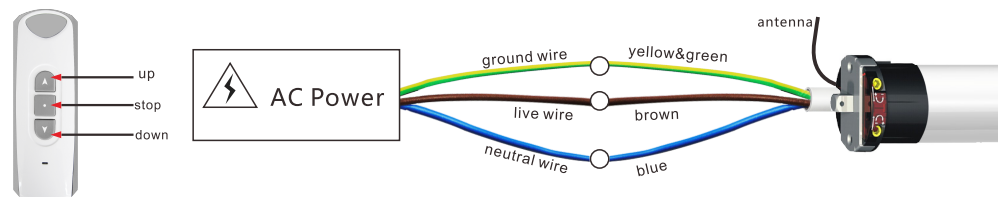


# EB Motor Instruction

## 1 Technique Specifications

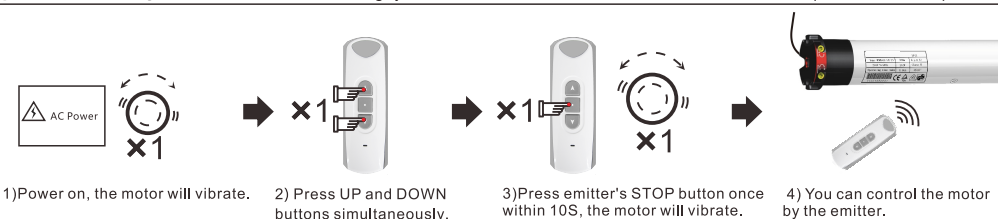
- Power: AC 220V(110V)/50Hz (60Hz)
- The motor can be compatible with 15 emitters at most
- Protection Index: Ip44

## 2 Wire Connection

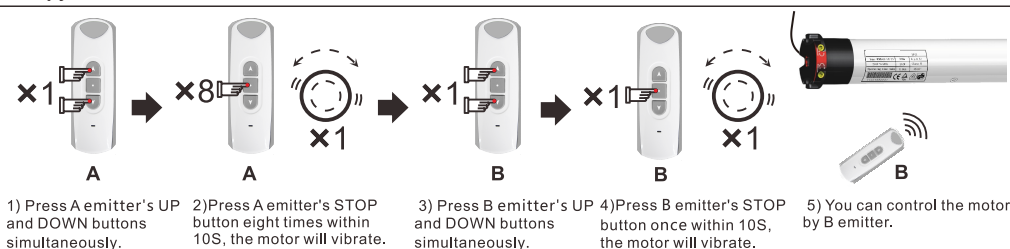


## 3 Code Learning

Note: After code learning, you can use the emitter to control the motor to run up, down and stop.

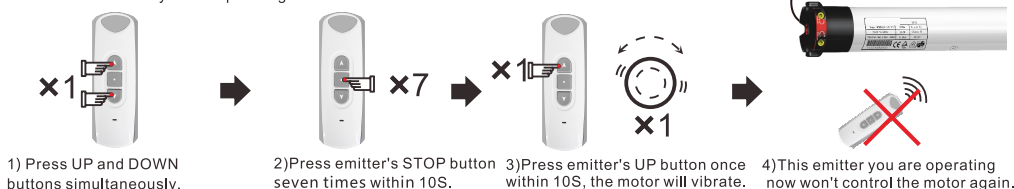


## 4 Copy

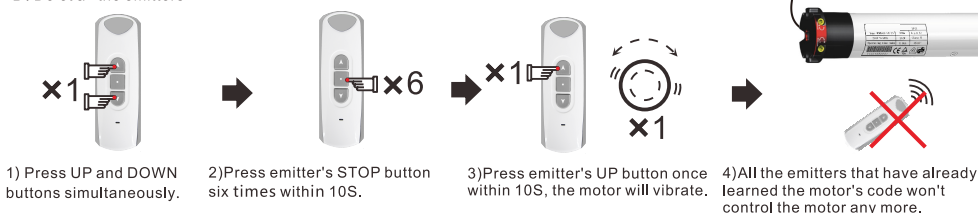


## 5 Code Deleting

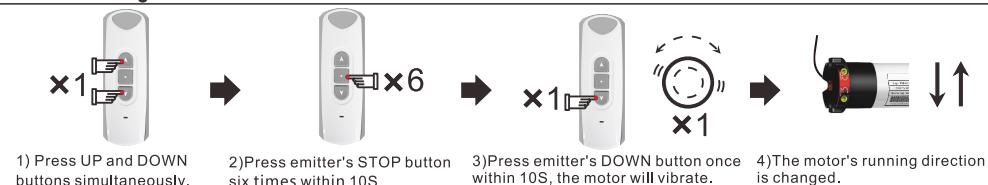
A: Delet the emitter you are operating



B: Delet all the emitters

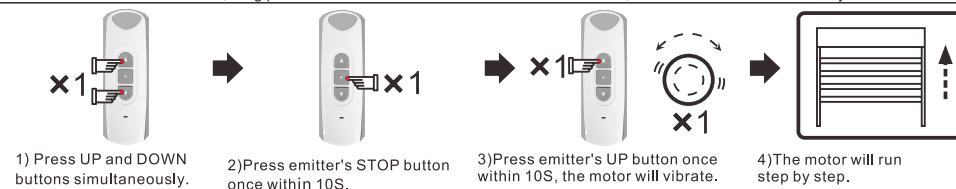


## 6 Direction Change

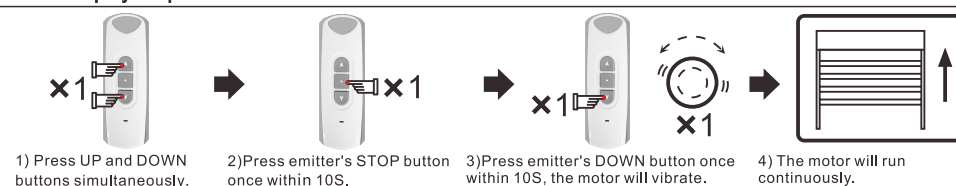


## 7 Set Step by Step Function

If the motor is in vibration state, long press emitter's UP or DOWN button for 3 seconds, the motor will run continuously.



## 8 Delete Step by Step Function



## ! Announcement

- Setting may fail due to the interference of signal. If in this case, please reset.
- The emitter RE101 is taken as an example in this instruction. The receiver is compatible with several other rolling code emitters.
- Please do not press buttons for too long in case life span of battery declines. Pressing time should be at 0.5S, interval timeshould be 1 second.If the battery is in low power, please replace battery.
- The control unit is of high voltage. Please do not place it in humid atmosphere.
- Children should be supervised to ensure that they do not play with the appliance.
- Ambient temperature:-10℃~+55℃.
- All products are as per material subjects if there is change in appearance, color, function etc. The information is subject to changes without prior notice.