

RC006 Instruction

1 Technique Specifications

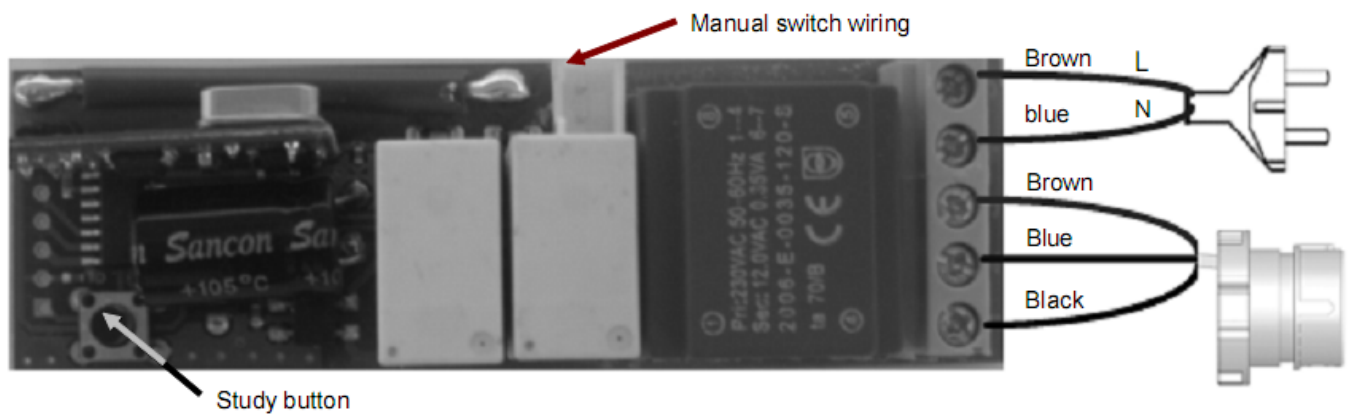
Emitter:

- Power: 3V Model: CR 2430
- Protection Index: IP 30
- Frequency: 433.92MHz
- Working Current: ≤12mA
- Code: Rolling code

Receiver:

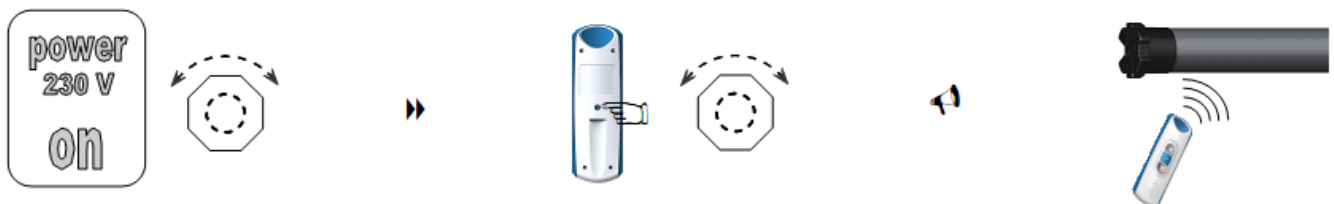
- Power: AC185~240V(50/60Hz)
- Rated load: ≤400W
- The receiver will cut the power after working for 4mins continuously
- The receiver can be controlled by 15 emitters at most

2 Wires Connect



Description : The motor can be achieved up-stop-down-stop sequence by manually switching

3 Code learning (way a)



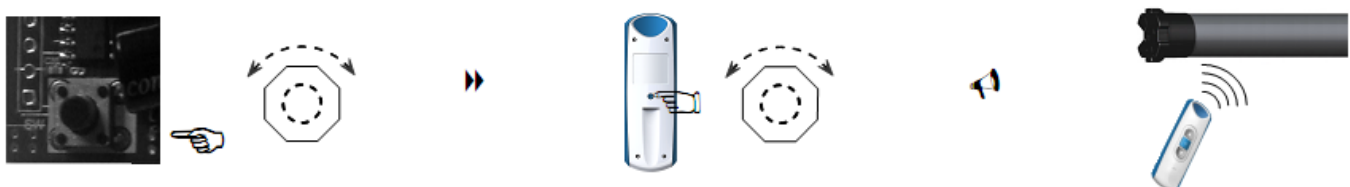
1) Switch on the power then the motor will vibrate

2) Press learning button once and the motor will vibrate again

☺ You can control the motor by emitter

Note: You can control the motor by up, stop and down buttons after code learning.

way b

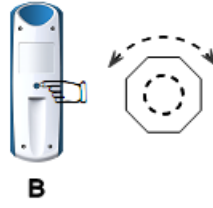
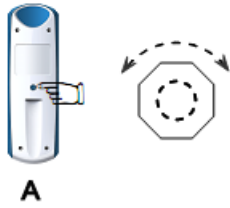


1) Press the study button once the motor will vibrate

2) Press learning button once and the motor will vibrate again

☺ You can control the motor by emitter

4 Copy

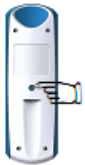


1) Press learning button of emitter A six times and the motor will vibrate

2) Press learning button of emitter B the motor will vibrate

☺ The motor can be controlled by emitter B

5 Code Deleting (way a)



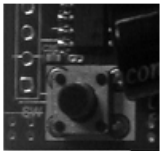
1) Press learning button three times

2) Press up button once the motor will vibrate

☹ No emitter can control

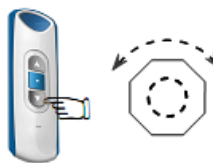
Note: No emitter can control this motor after code deleting unless you reset it.

way b



Description: Long press the study button till the the motor vibrate three times. Then the code is deleted and no emitter can control the motor.

6 Direction Change

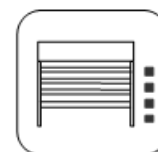
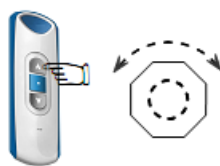
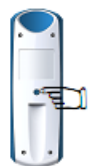


1) Press learning button three times

2) Press down button once the motor will vibrate

☺ The direction is changed successfully

7 Step-by-step-function



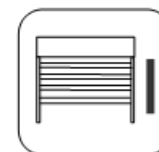
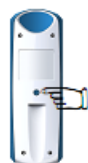
1) Press learning button twice

2) Press up button once
the motor will vibrate

☺ The motor will work step-by-step

Note: Under step-by-step, if long press up & down button of emitter, the motor runs continuously.

8 Delete step-by-step function



1) Press learning button twice

2) Press down button once
the motor will vibrate

☺ The motor runs continuously



Notes

- During the set-up, there might be interference from other signals which lead to the failure. Please reset again.
- For the functions illustration, we take the example of RE101. Well, this receiver could work with any rolling code emitter of our company.
- It is better not to press the emitter's buttons too long so as to prolong the battery life. The button press should be about 0.5s with 1s interval. The emitter would stop working if the battery is in low power. Please change new battery for the emitter.
- The receiver is of high voltage. Keep it away from the water.
- Keep away from children to avoid any possible damage to the receiver caused by their play.
- Working temperature: -10°C ~ +55 °C.
- Description and specifications given in this introduction are subject to modification without notice. If there is any change on the appearance and color of products, please refer to real objects .