

RC 103 Instruction

1 Technique Specifications

Receiver

- Power: AC 220V/ 50Hz(AC110V/60Hz)
- Rated load: not exceed400w (AC)
- The receiver can be controlled by 15 emitters at most
- The receiver will be power-off automatically after working for 4mins continuously

2 Wires Connect



L:In230VacL line (brown)

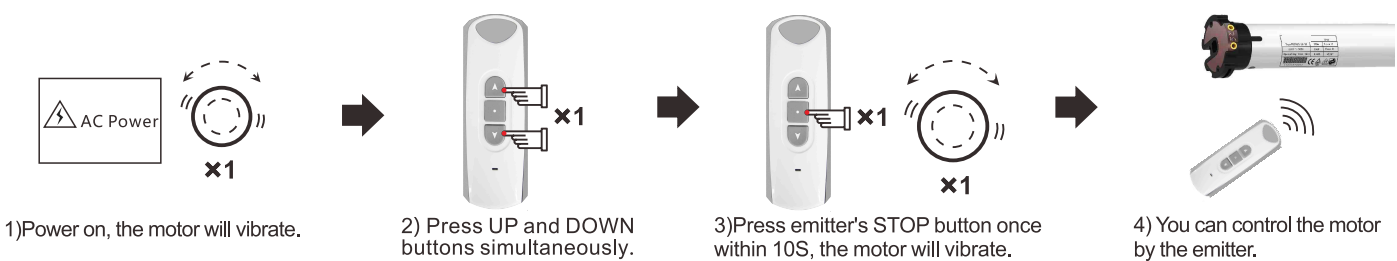
N:In230VacN line (blue)

COM: Motor neutral wire (blue)

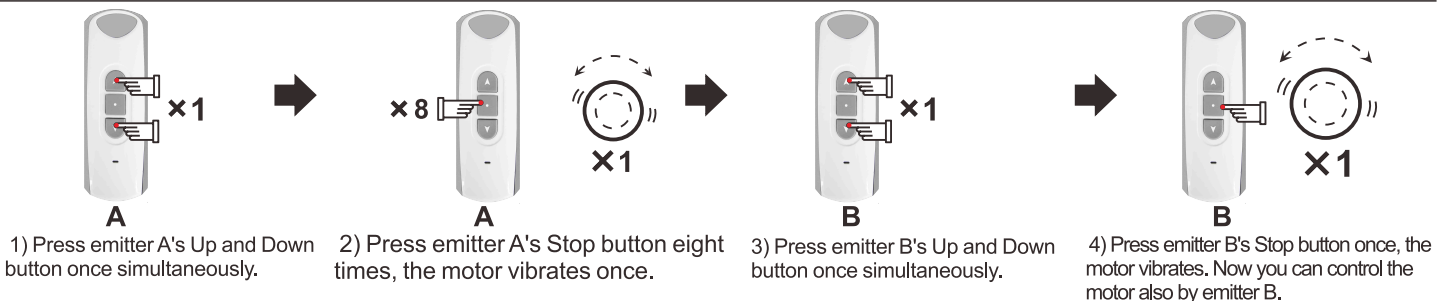
▲ :Motor up/down (black/brown)

▼ :Motor down/up (brown/black)

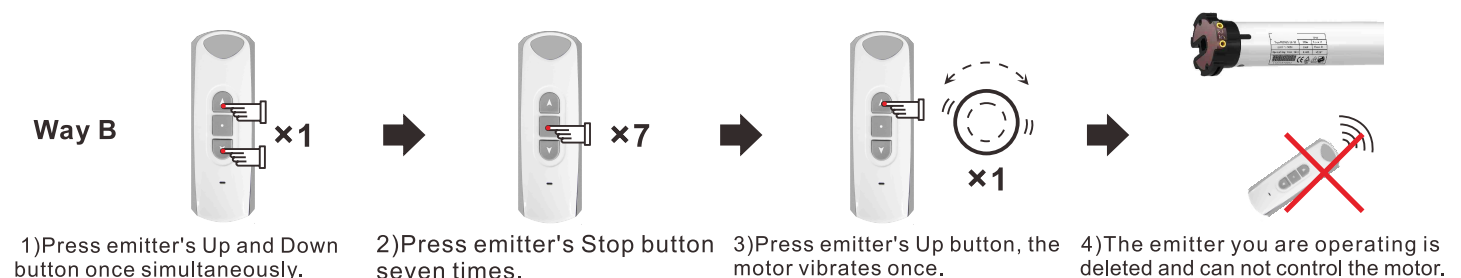
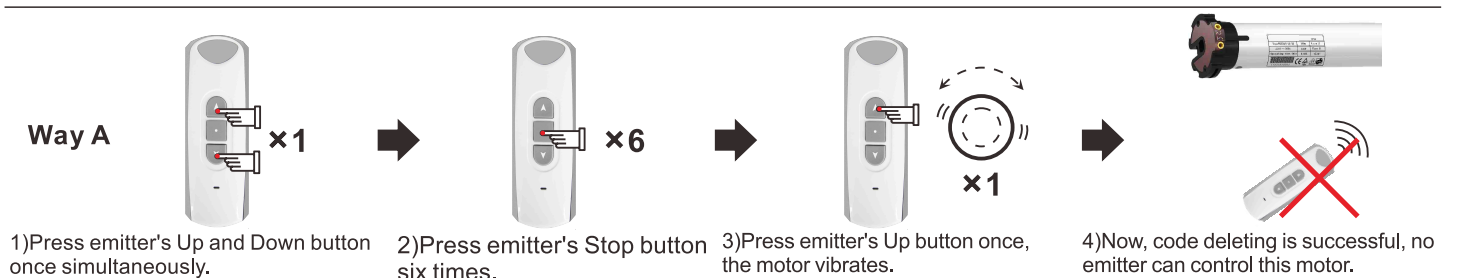
3 Code Learning



4 Copy Note: Emitter B can control the tubular motor after it learns code from emitter A.

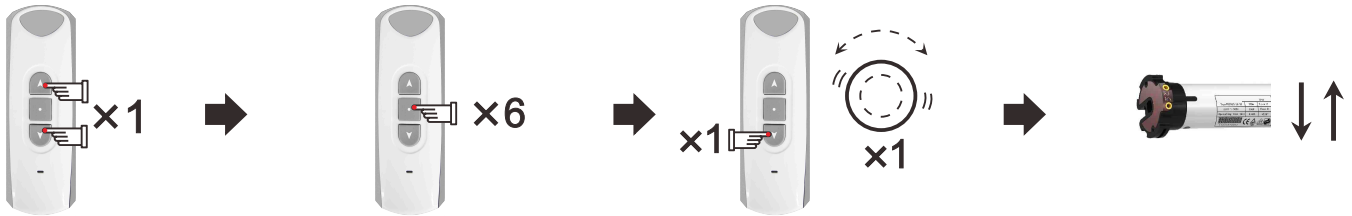


5 Code Deleting Note:No emitter can control this tubular motor after code deleting unless you reset.



RC 103 Instruction

6 Direction Change



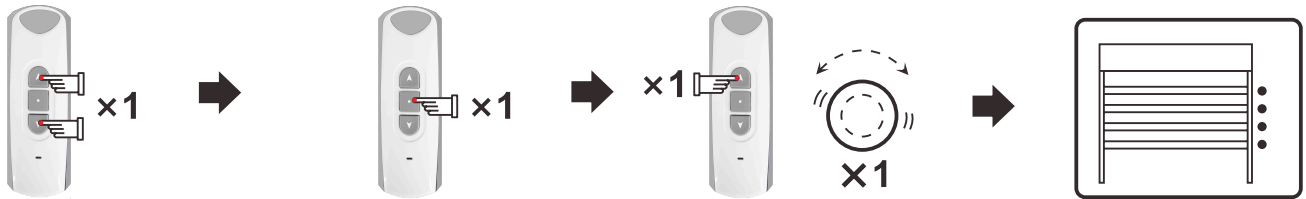
1) Press emitter's Up and Down button once.

2) Press emitter's Stop button six times.

3) Press emitter's Down button once, the motor vibrates.

4) The motor's running direction is changed.

7 Set Step by Step Function



1) Press emitter's Up and Down button once.

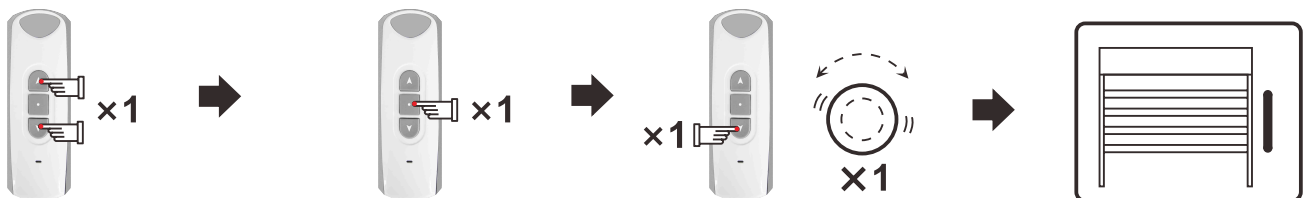
2) Press emitter's Stop button once.

3) Press emitter's Up button once, the motor vibrates once.

4) The motor will run step by step.

If the motor is in vibration state, press emitter's Up or Down button for 3 seconds, the motor will run continuously. Press the Stop button, the motor will change into vibration state.

8 Delete Step by Step Function



1) Press emitter's Up and Down button once.

2) Press emitter's Stop button once.

3) Press emitter's Down button once, the motor vibrates once.

4) The motor will run continuously.

! Announcement

- The setting may fail due to other signal interference. In this case, please reset.
- The emitter RE101 is taken as an example in this instruction. The receiver is compatible with other rolling codes emitters too.
- If emitter's battery is in low power, please replace it.
- The receiver is of high voltage, please do not place it in humid atmosphere.
- Children should be supervised to ensure that they do not play with the appliance.
- Working temperature: -10°C ~ +55 °C .
- All products are as per real subjects. There will be no prior notification if any change in appearance, color, functions etc.