

# T201 Instruction

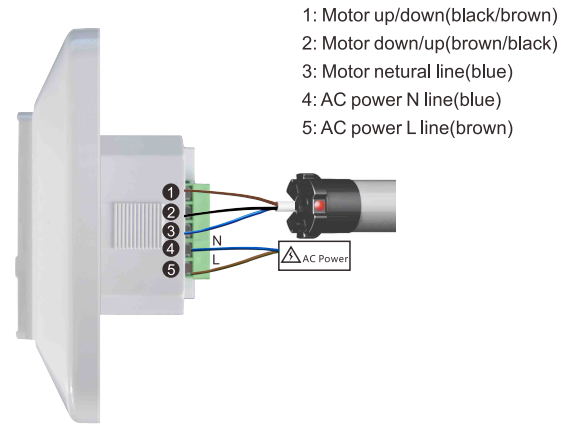
## 1. Technique Specifications

Power: AC 220V/50Hz(AC110V/60Hz)  
 Rated: ≤ 400W

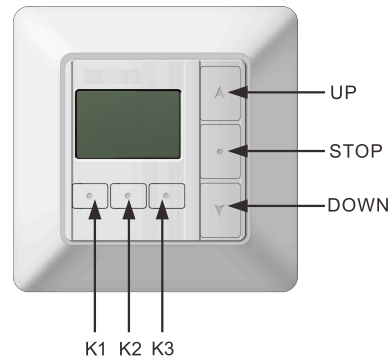
The receiver will stop working automatically after working for 4mins continuously.  
 The motor can be controlled manually by the outer buttons of UP,STOP and DOWN

If receiver is under the condition of no power, LCD(Liquid Crystal Display) will go to energy-saving mode after 10 mins,please enter any button to work.

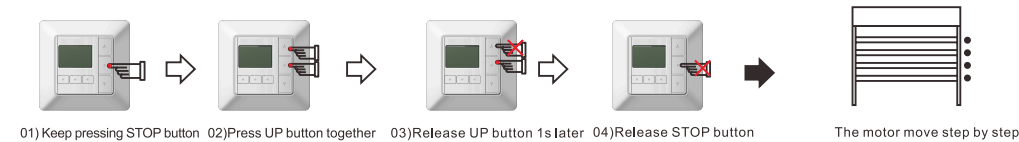
## 2. Motor Wiring diagram



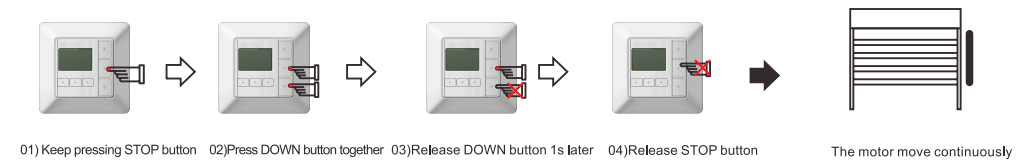
## 3. Product appearance



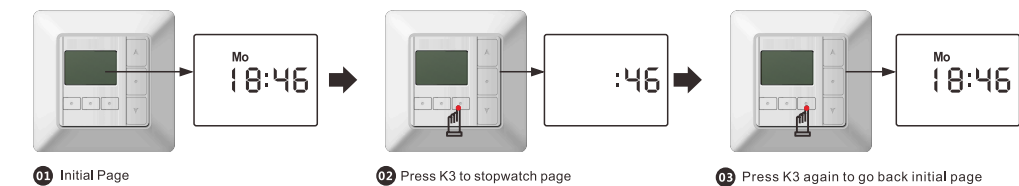
## 4. Set Step by Step Fuction



## 5. Delete Step by Step Fuction

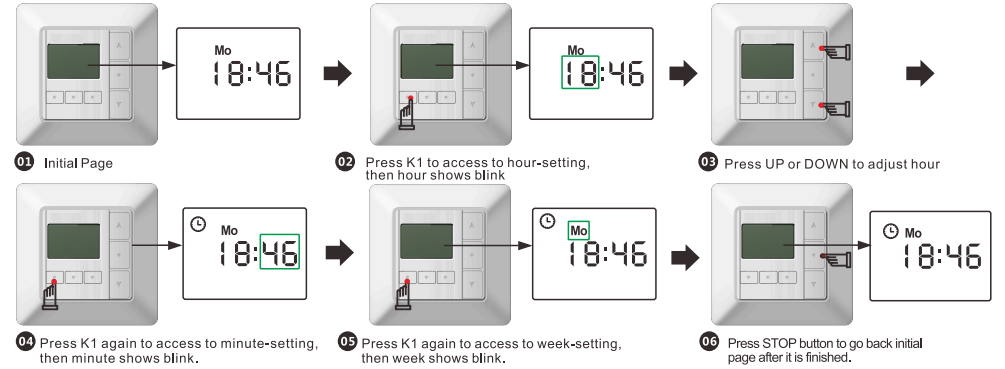


## 6. STOPWATCH



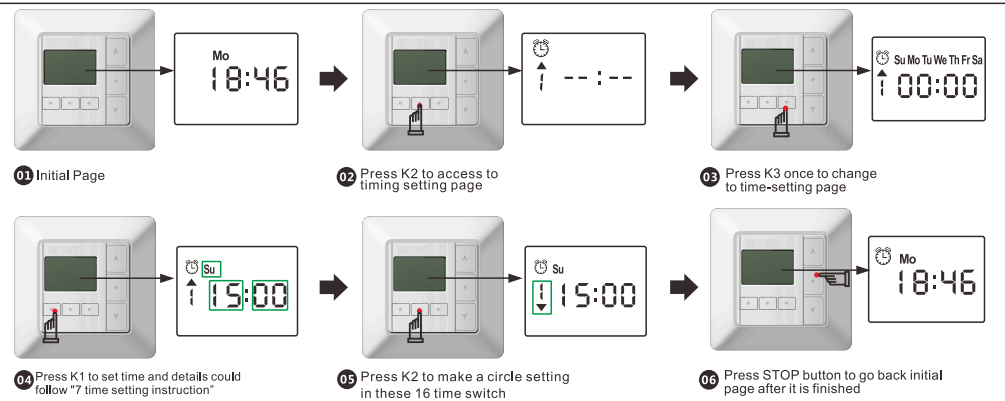
## 7. Time-setting

Press K1 when it is in the initial page then it accesses to time setting page, the time mark ⌚ will be showed in the upper-left corner of LCD. Time setting includes hour, minute and week and K1 could be used to adjust these three parts in a circle.



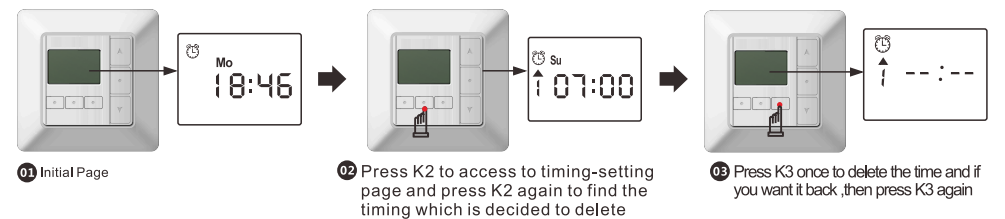
## 8. Timing setting

Please press K2 when it is in the initial page to access to timing-setting page, the time mark ⌚ will be showed in the upper-left corner of LCD. You can set time by 8 timing switch ↑↓/⏸-⏸ separately and make a circle timing setting among 16 time switch by pressing K2.



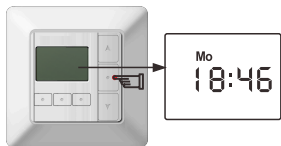
Instruction: You can set different timing in one day or keep timing unchanged in several days, such as setting time from Monday to Friday, Monday to Saturday or Monday to Friday. Attention, only is there a mark ⌚ in the upper-left corner of the LCD in your initial page, it works, otherwise, you should try again. If there is no mark ⌚ in the upper-left corner of the LCD, please keep pressing STOP button and press K2 in 3s, the mark ⌚ will be showed then.

## 9. Delete timing



# T201 Instruction

---



04 Press STOP button to go back initial page after it is finished.

---

## Safety Notes

---

1. Keep away from children to avoid any possible damage.
  2. If the supply cord is damaged, it must be replaced by the manufacturer, the service agent or similarly qualified electric technicians in order to avoid danger.
  3. The receiver is of high voltage. Keep it away from water or other extremely wet places.
  4. Any technical changes in the products will be showed in our new revision of instruction without further notice. If there is change of appearance and color between image and actual product, the actual product shall govern.
-