

T202 Instruction

1.Safety Notes

1. Keep away from children to avoid any possible damage.
2. If the supply cord is damaged, it must be replaced by the manufacturer, the service agent or similarly qualified electric technicians in order to avoid danger.
- 3.The receiver is of high voltage. Keep it away from water or other extremely wet places.
- 4.Any technical changes in the products will be showed in our new revision of instruction without further notice.If there is change of appearance and color between image and actual product, the actual product shall govern.

2.Technique Specifications

Power: AC 220V/50Hz(AC110V/60Hz)

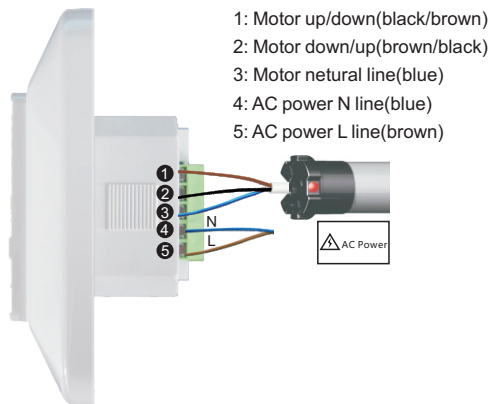
Rated: ≤ 400W

The receiver will stop working automatically after working for 4mins continuously.

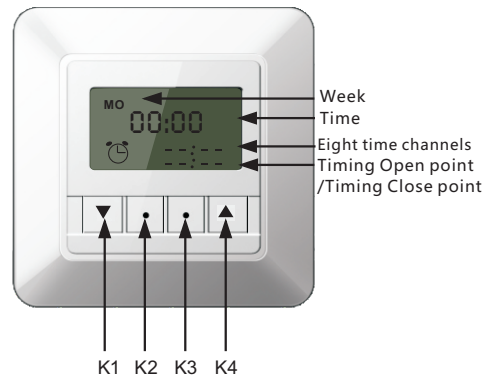
The motor can be controlled manually by the outer buttons of UP,STOP and DOWN

Receiver enters into power-down mode after running 10 mins without external power supplying, LCD (Liquid Crystal Display) will go to energy-saving mode after 10 mins,please enter any button to reactivate.

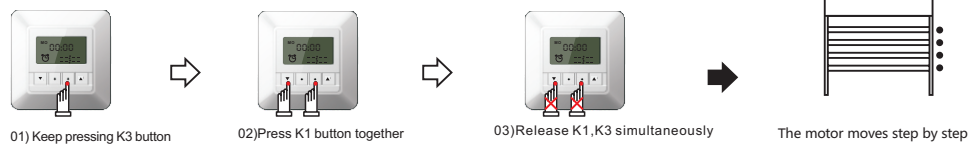
3.Motor Wiring diagram



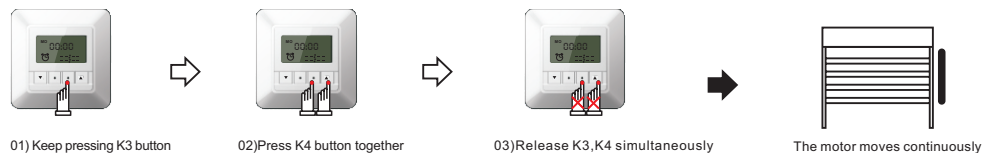
4.Product appearance



5.Set Step by Step Function



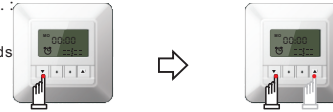
6.Delete Step by Step Function



7.Function Setting

01) Push Button.

A Downwards Running.



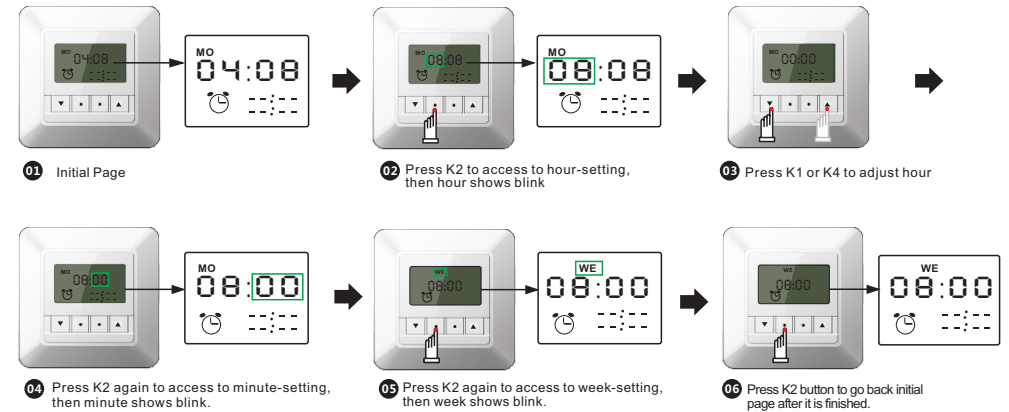
B Up wards Running.



- 1) At the initial page state, motor runs 02) Press K1 again or K4 once, downwards by pressing K1 once, motor stop running.
01) At the initial page state, motor runs upwards by pressing K4 once. 02) Press K4 again or K1 once, motor stop running.

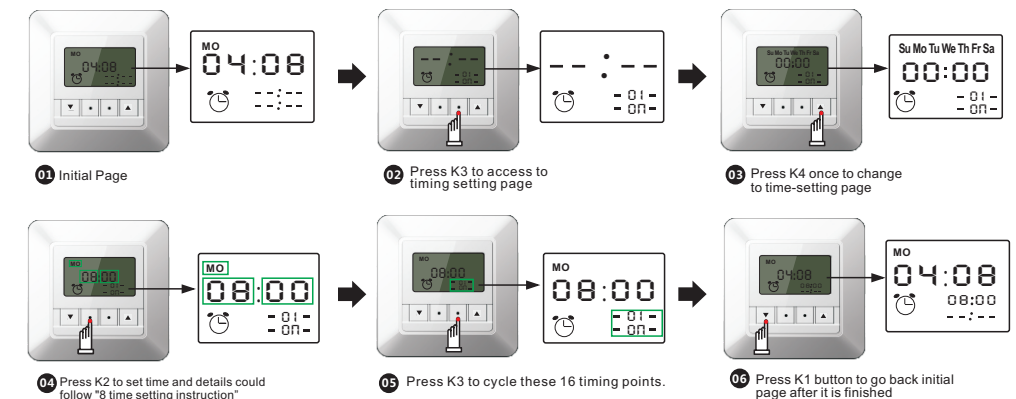
8.Time-setting

At the initial page, long press K2 to enter the time-setting page, Time setting includes hour, minute and week and K2 could be used to adjust these three parts in a circle.



9.Timing setting

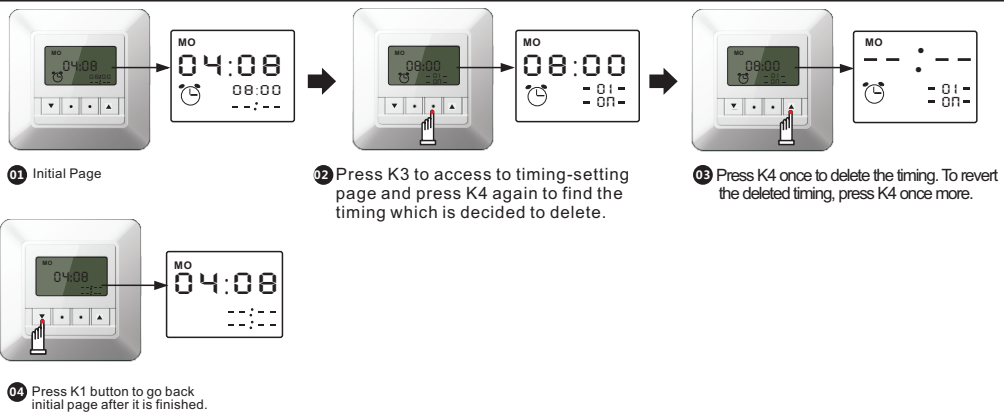
Please press K3 when it is in the initial page to access to timing-setting page, the timing mark will be showed in the Lower-left corner of LCD. You can set time by 8 timing switch separately and make a circle timing setting among 16 points by pressing K3.



Instruction: You can set different opening and closing time in one day or keep opening and closing time unchanged in several days, such as setting same time from Monday to Friday, Monday to Saturday or Monday to Sunday.

T202 Instruction

10.Delete timing



11.Stopwatch Function

