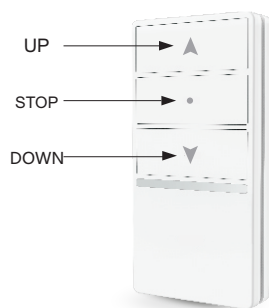
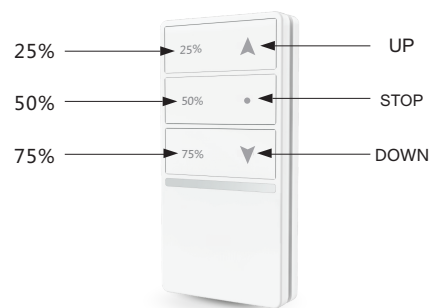


# Emitter Instruction for RE601/RE602/RE601-i/RE602-i series

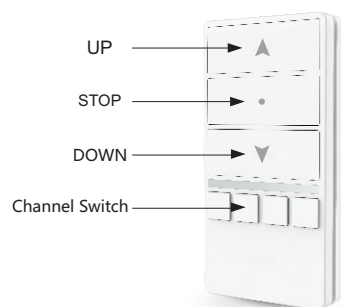
## 1. Product appearance



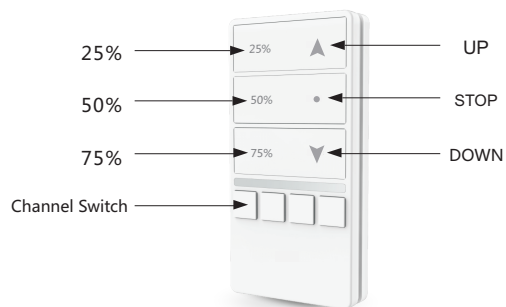
WSRE601  
Single Channel



WSRE601-i  
Single Channel  
Featured 3 intermediate Limits  
Position: 25%,50%,75%



WSRE602  
Four Channels



WSRE602-i  
Four Channels  
Featured 3 intermediate Limits  
Position: 25%,50%,75%

## 2. Technique Data

- Power: 3v Model CR2032
- Working Temperature: -20°C to +60°C
- Code: rolling code

- Currency : ≤16mA
- Frequency : 433.92MHz

## 3. Code learning

### single-channel emitter

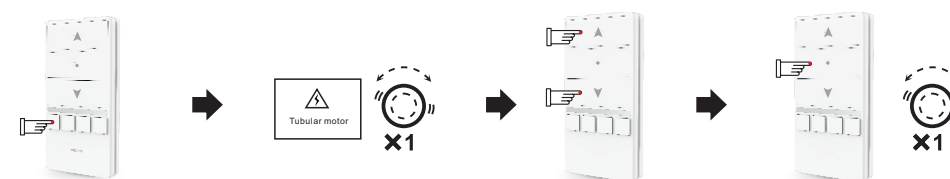


1) Turn power on, the motor will vibrate.

2) Short press UP and DOWN button simultaneously then release.

3) Short press STOP button then release, the motor will vibrate again, the remote is assigned to the motor successfully.

### 4 channel emitter



1). Short press the Channel Switch Button to select a channel (from 1 to 4), once selected, the corresponding light will shine.

2). Turn power on, the motor will vibrate.

3). Short press UP and DOWN button simultaneously then release.

4). Short press STOP button then release, the motor will vibrate again, the current channel is assigned to the motor successfully. Follow the same steps to assign other channels to other motors.

## 4. Group control

Example: RE602 series could set four Channels, each channel with corresponding button and light.

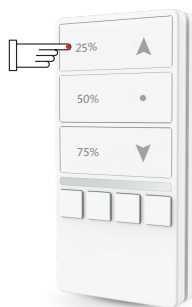


a). During Sleep Mode (all lights are off), press any one switch button once, could check which channel have been set (corresponding light will shine).

b). During channel checking (channel light are on), press the channel switch button again. If the channel haven't ever is set, it will be set now, if the channel have ever been set, it will be deleted now and corresponding light off.

# Emitter Instruction for RE601/RE602/RE601-i/RE602-i series

## 5. Percentage control



After code learning and motor's UP and DOWN limit are set (refer to tubular motor's user manual), short press left button of 25%, 50% or 75% will send your blinds/shutter to corresponding position.

## 6. bracket installation

Way1 : Direct wall installation

Way2 : American insert installation



### Note

- If you need set group control, you have to add or delete channels within 3-4s after checking channel.
- Only after code learning successful ,you can control the percentage.
- You'd better not press the emitter's buttons too long so as to prolong the battery . The button press should be about 0.5s with 1s interval.
- The emitter will stop working if the battery is in low power. Please replace the battery in this case.