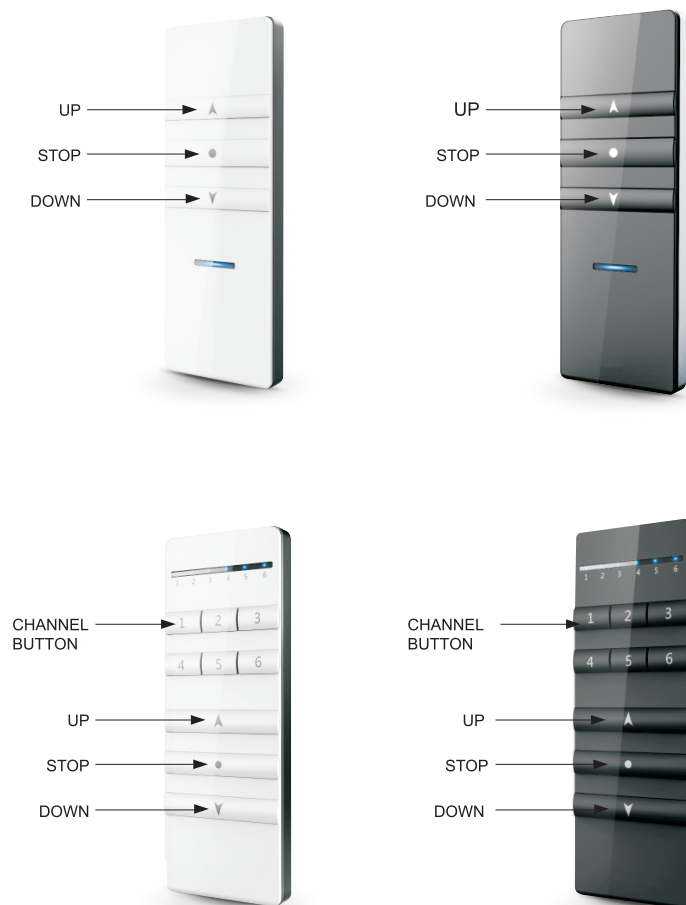


# WSRE901 and WSRE902 version emitter instructioneries

## 1. Product Appearance



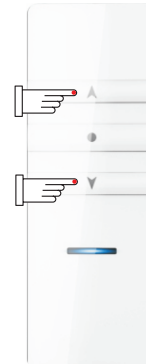
## 2. Technique Data

- Power: 3v Model CR2032
- Working Temperature: -20 C to +60 C (Non -LCD emitt er)
- Code: rolling code

- Currency: ≤ 16mA
- Frequency: 433.92MHz
- Protection Index: IP20

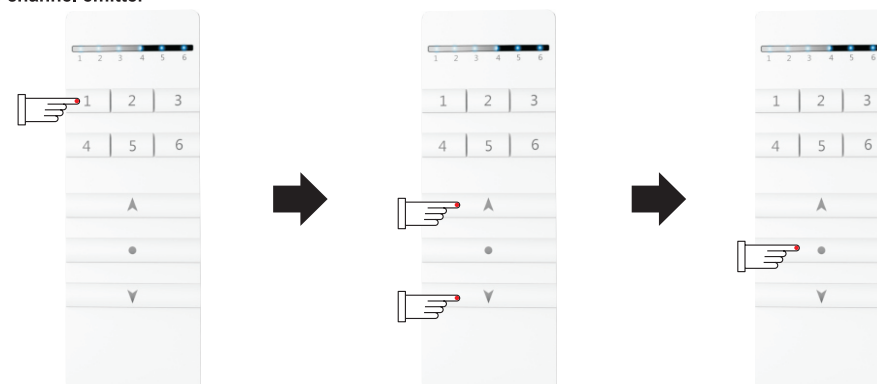
## 3. Code Learning

single-channel emitter



Press Up and Down buttons simultaneously once, then short press Stop button once.

## 6 channel emitter

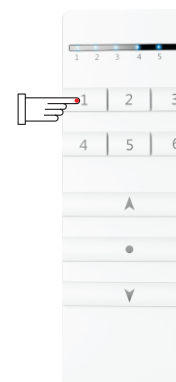


1). Press the selected channel button, the coressponding light will be shine.

2). Press UP and DOWN buttons simultaneously once.

3). Then short press the Stop button, now the code learning of the selected channel is successful, other channels to learn code in the same way.

## 4. Group Control(6 channel emitter)



Short press the Channel Button to select different channels (from 1 to 6), once selected, corresponding light will shine.

**Note:** If more than one light are on, it means the emitter is in Group Control state.

# WSRE901 and WSRE902 version emitter instructioneries



## Notice

---

- If you need set group control, you have to add or delete channels within 3-4s after checking channel.
- You'd better not press the emitter's buttons too long so as to prolong the battery . The button press should be about 0.5s with 1s interval.
- The emitter will stop working if the battery is in low power. Please replace the battery in this case.